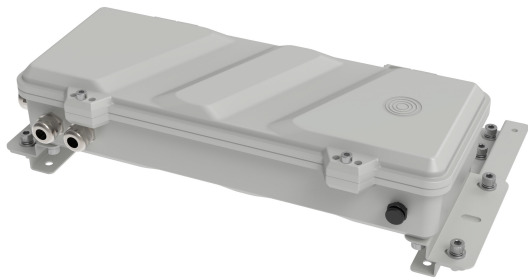


# PRODUCT DATASHEET

## FL MAX PSU DA P 900W WAL

FLOODLIGHT MAX POWER SUPPLY | Driver boxes for luminaire power, ensuring optimal connectivity via On/Off, DALI, DMX



PERFOR-  
MANCE  
CLASS

### Areas of application

- Suitable for indoor and outdoor installations
- Ports/logistics: lights deep & wide areas, ideal with C5 corrosion protection

### Product benefits

- For extreme temperatures:  $-40^{\circ}\text{C}$  to  $+50^{\circ}\text{C}$  (outdoors), up to  $+40^{\circ}\text{C}$  (indoors)
- Driver box installable up to 150 m from head, central maintenance, reduced mast weight
- Pre-fitted connectors enable quick, waterproof wiring on site (IP66)
- Standardized drivers are always easy to replace for simple maintenance
- Auxiliary DALI power for sensor and control integration, e.g. Smart City
- Optimized logistics: luminaire and driver box can be ordered separately
- Future-proof: high efficiency, long life and multiple interfaces
- Robust and weatherproof: IP66 / IK08, C5-M corrosion protection for harsh environments

### Product features

- Wide voltage range: 200-480V AC
- Efficiency:  $\leq 97\%$ , saves energy and reduces running costs
- Integration: for lighting control, DMX, 0-10V dimming
- Climate membrane protects from water and lets air pass through
- Surge protection: up to 20 kV, improved safety in stadiums
- Emergency lighting: EN 60598-2-22 compliant
- Protection: lockable driver box prevents tampering

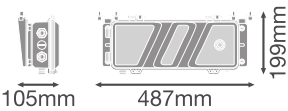
TECHNICAL DATA

Electrical data

Nominal wattage	900.00 W
Nominal voltage	200...480 V
Mains frequency	0/50/60 Hz
Max. number of luminaires per miniature circuit breaker B16	1
Max. number of luminaires per miniature circuit breaker C16	1
Power factor $\lambda$	> 0.94
Protection class	I
Surge capability (L-N)	20 kV

Dimensions & Weight

Length	487.00 mm
Width	199.00 mm
Height	105.00 mm
Product weight	6100.00 g



FL MAX PSU DA P

Materials & Colors

Product color	Gray
RAL-Number	RAL 9006
Body material	Aluminum
Glow Wire Test according to IEC 60695-2-12	650 °C

Application & Mounting

Ambient temperature range	-40...+50 °C
Temperature range at storage	-40...85 °C
Type of protection	IP66
Protection class IK (shock resistance)	IK08

Corrosion resistance class acc. to EN 12944	C5
Dimmable	Yes
Type of dimming	DALI2
IoT ready	Support of DALI data type PART 251, 252, 253 <sup>1)</sup>
Replaceable light source	No

<sup>1)</sup> Internet of Things. Supports data transfer via gateway to cloud-based monitoring platforms, such as LEDVANCE VIVARES Cloud




### Certificates & Standards

Standards	CE / CB / ENEC / UKCA / EAC / EPD / EL
Ball shot safe	Yes

### Additional product data

Product remark	Available from December 2025
Added function	VIVARES

### Accessories Optional

Product image	Product name	EAN
	FL FLEX ADAPTER SOCKET NEMA	4099854680113
	FL FLEX ADAPTER SOCKET ZHAGA	4099854680076
	FL MAX CONNECTOR BOX	4099854696176





### EQUIPMENT / ACCESSORIES

- Cable glands included and preinstalled in the power supply

### Safety advice

- All electrical connections must be made by a qualified person.
- Caution, risk of electric shock.
- Product in protection class I. All electrically conductive, metallic housing parts that can absorb voltage during operation or during maintenance in the event of a fault must be continuously connected to the protective earthing conductor.

### DOWNLOAD DATA

Documents and certificates		Document name
	Legal information	SI_G11205497_10_ 1 safety insert
	Legal information	G11251566 legal insert
	Legal information	Informationstext 18 Abs 4 ElektroG
	EU Data Act	DALI LED Driver and Luminaires

LOGISTICAL DATA

Product code	Packaging unit (Pieces/Unit)	Dimensions (length x width x height)	Gross weight	Volume
4099854681677	Shipping box 1	567 mm x 257 mm x 154 mm	6570.00 g	22.44 dm³

The mentioned product code describes the smallest quantity unit which can be ordered. One shipping unit can contain one or more single products. When placing an order, for the quantity please enter single or multiples of a shipping unit.

References / Links

– For Guarantee see [www.ledvance.com/guarantee](http://www.ledvance.com/guarantee)

DISCLAIMER

Subject to change without notice. Errors and omission excepted. Always make sure to use the most recent release.